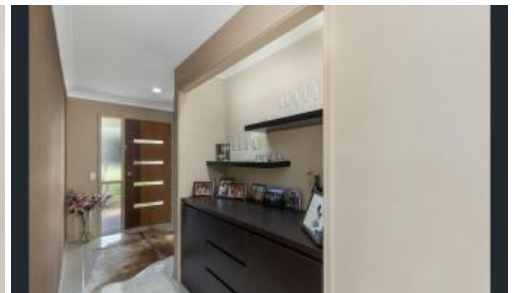


Sold

34 Homebush Cres, Sinnamon Park



BEAUTIFUL LOW MAINTENANCE BUSHLAND SETTING

This gorgeous family home offers savvy buyers outstanding value for money and is ideal for those who enjoy low maintenance living and the added luxury of privacy all encapsulated on this beautiful 521sqm block capturing the cool airy breezes.

Absolutely nothing to do and set amongst other quality homes, this spacious one level family home is sure to impress!

34 Homebush Crescent Sinnamon Park offers

- Three good sized bedrooms
- All bedrooms with built in robes and ceiling fans
- Master bedroom ensuite and aircon
- Security Screens & Crimsafe doors
- Driveway suitable for additional cars
- Open plan kitchen with new European kitchen appliances & Bosh dishwasher
- Spacious family and dining area with aircon
- Remote control double lock up garage with internal access
- Private outdoor entertaining area with outdoor SPA and overlooking gorgeous bushland setting
- Fenced and established low maintenance garden
- Easy care 521sqm block
- Great quiet position in family friendly neighbourhood
- Garden shed and solar electricity

3 2 2 521 m2

Price	SOLD
Property Type	Residential
Property ID	2314
Land Area	521 m2

AGENT DETAILS

Jan Laing & Alan Peters - 0411 427 452

OFFICE DETAILS

Innovation Real Estate
31 Horizon Dr Jamboree Heights,
QLD, 4074 Australia
0411 427 452



Situated in such a sought-after suburb with convenient access to Brisbane CBD, public transport, local shops, parks, cafes and restaurants.

Very rarely do homes like this come up so call Jan or Alan to inspect this beauty today!

The above information provided has been furnished to us by the vendor/s. We have not verified whether or not that information is accurate and do not have any belief in one way or the other in its accuracy. We do not accept any responsibility to any person for its accuracy and do no more than pass it on. All interested parties should make and rely upon their own inquiries in order to determine whether or not this information is in fact accurate.